

straightcurve®

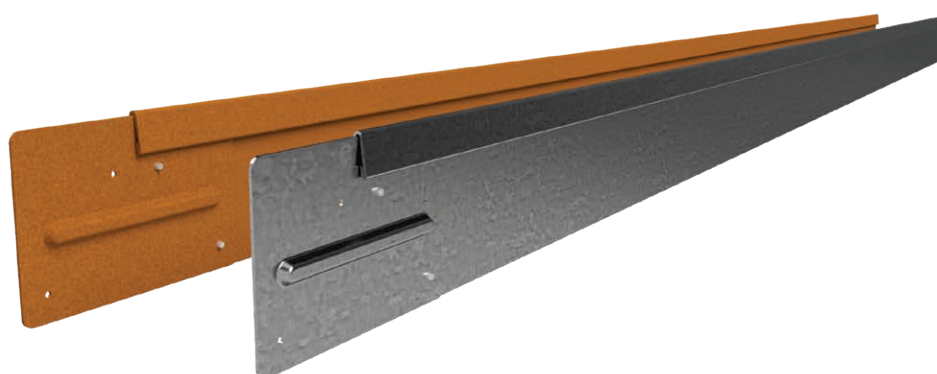
Specifications

100mm Rigidline™

LENGTH 2200mm | TOP THICKNESS 8mm

FINISHES

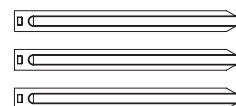
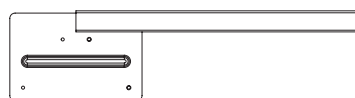
- Galvanised Steel
- Weathering Steel



Steel plate thickness 1.6mm

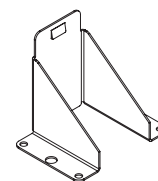
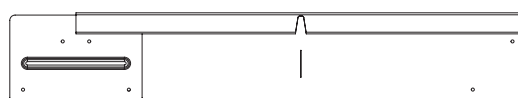
SOLD AS SET INCLUDING

- ✓ Connector plate (pre-attached)
- ✓ 3 x galvanised pegs



ADDITIONAL ACCESSORIES

- ✓ 500mm Corner piece (bend to desired angle)
- ✓ Hard surface fixing bracket



Installation guide 100mm Rigidline™

*Scan me for
Video installation!*



Scan the code or follow the link below for installation video.
100mm Rigidline™ installation video

PREPARATIONS

Mark line and level out or create a trench. If using as a non-invasive grass barrier, clear grass from the garden bed that you want to isolate from the lawn.

CORNERS

Standard corners are available for purchase, but you can choose to make your own. Simply score a line down the back of the edge and create a sufficient opening (5-7mm) in the double folded lip at the top. Bend by hand. Placing a block of wood close to the fold improves the result.

REQUIRED FIXINGS

- ✔ 2 x Tek Screws (12G x 16mm) or
- ✔ 2 x pop rivets (3mm shaft)

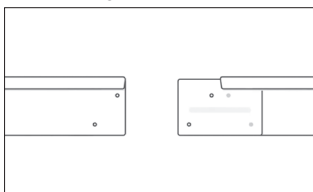
HARD SURFACE FIXING

If you need to secure the edge to hard surfaces, the hard surface fixing bracket can be used. It's compatible with fixing pins or can be bolted down. (Options sold separately)

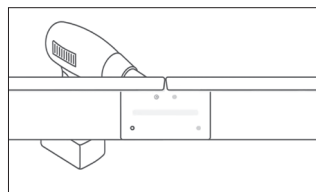
TIP

- ✔ Position whole run first to be sure it's spot on before fixing in place.
- ✔ Insert ALL fix pegs adjacent edge (3A), then work from one end to the other to fix (3B).
- ✔ When working around an existing lawn, use marker paint to set out your line and make a clean cut with your shovel or edge cutter. This way you can install the edge snug against the lawn.

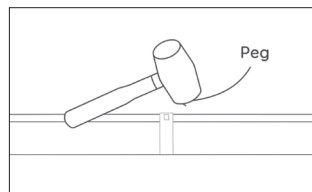
STEP 1 - JOIN



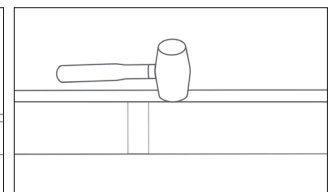
STEP 2 - SCREW



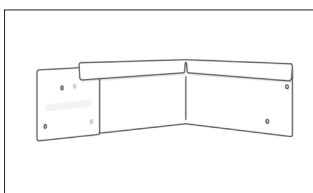
STEP 3A - PEG



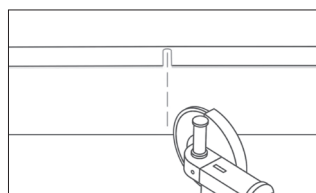
STEP 3B - FIX



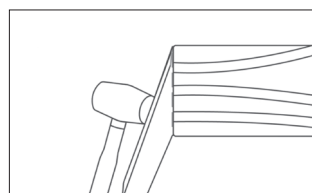
PRE-MADE CORNER



MAKE CORNER - NOTCH/SCORE WITH GRINDER



TIGHT RADIUS



TIGHT RADIUS

