

straightcurve®

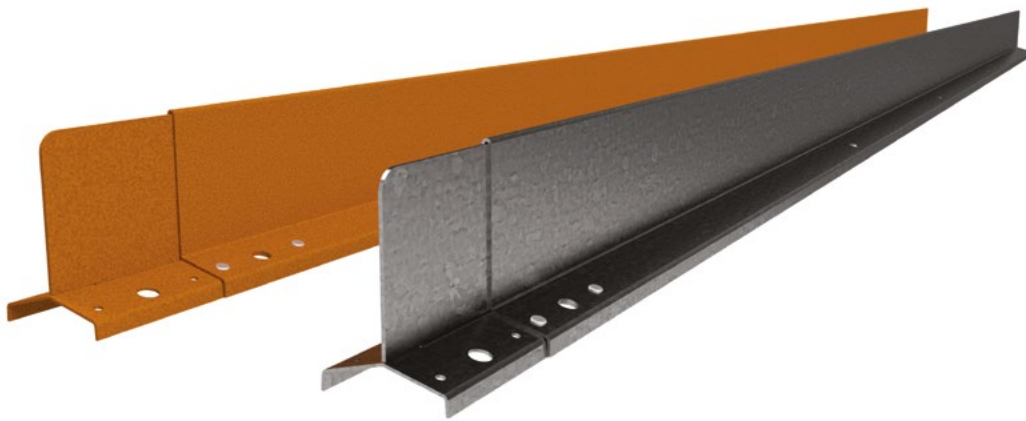
Specifications

100mm Hardline™

LENGTH 2200mm | TOP THICKNESS 7mm

FINISHES

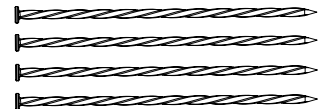
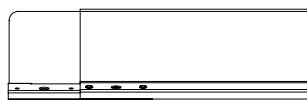
- Galvanised Steel
- Weathering Steel



Steel plate thickness 1.6mm

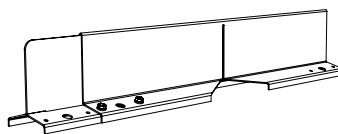
SOLD AS SET INCLUDING

- ✓ Connector plate (pre-attached)
- ✓ 4 x galvanised spikes, 300mm long



ADDITIONAL ACCESSORIES

- ✓ 500mm Corner piece (bend to desired angle)



Installation guide

100mm Hardline™



PREPARATIONS

Start with a compacted base of sand or roadbase. If you want to use this product in an existing garden and can't compact, dig holes at nail locations, fill with quick set concrete, insert the nails through the holes into the soft concrete. Allow to dry fully and backfill.

REQUIRED FIXINGS

- ☑ 4 x Tek Screws (12G x 16mm) or
- ☑ 4 x pop rivets (4mm shaft)

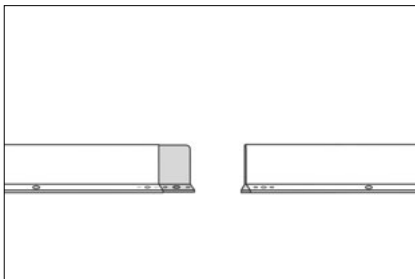
CORNERS

Standard corners are available for purchase*, but you can choose to make your own. Simply cut down the vertical wall and cut away a V in the shoulder foot (at least 120 degrees) on the side where you will bend it in. Make a single cut on the opposing side shoulder.

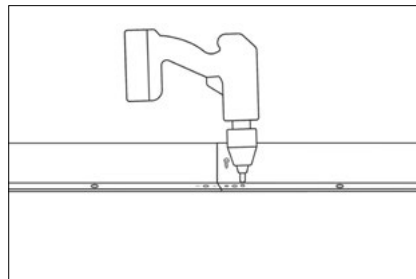
TIP

- ☑ If cutting in your own corner, stay +/-5 mm away from the top when making the cut in the wall to get a clean finish.

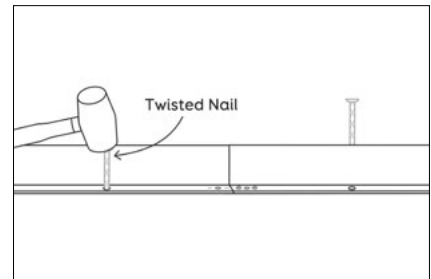
STEP 1 - JOIN



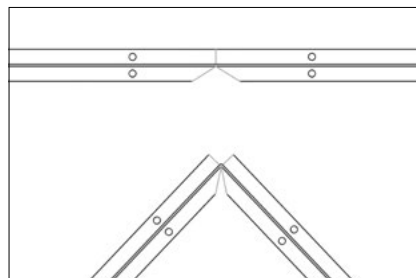
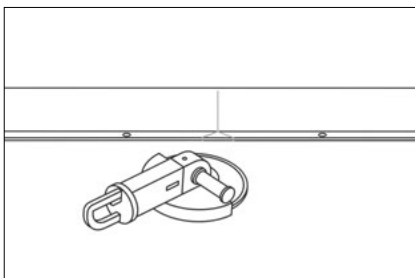
STEP 2 - SCREW (OR RIVET)



STEP 3 - FIX



MAKE CORNER - NOTCH/SCORE WITH GRINDER



PRE-MADE CORNER*

